

## Ordering Information

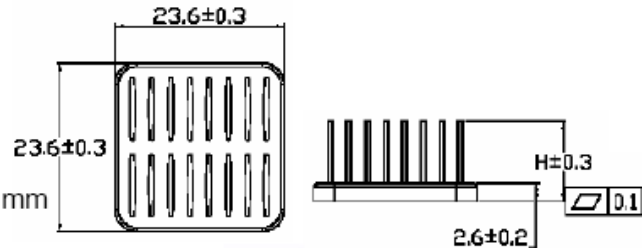
HH=Height		CC=Attachment
12mm	23mm	00 - None
15mm	28mm	01 - Yellow Clip
18mm	33mm	02 - Blue Clip
21mm		03 - Orange Clip
		05 - Special

## BGA Heat Sink Specification

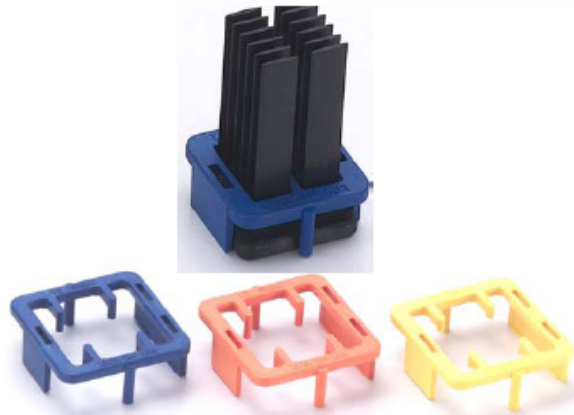
For 24x24 Chip set



- Material : Al 6063
- Dimension :  
Foot print : 24x24mm  
Height : 12,15,18,21,23,28,33 mm  
Base (thickness) : 2.6mm



- Finish: Black Anodize
- Chip set package thickness and clip color  
3.3+/-0.25mm - Yellow clip  
1.7+/-0.25mm - Blue clip  
0.8+/-0.25mm - Orange clip
- Accessory :  
Clip : Plastic (UL94-V0)  
Thermal pad : T710 or others



## Performance

Heat Source (LxW)	15x15
-------------------	-------

